

# 2012 Horse Project Record Book

EVERYONE COMPLETE

Exhibitor's Name: \_\_\_\_\_

Club Name: \_\_\_\_\_

Number of years in the horse project area? \_\_\_\_\_

2012 Graduating Senior? Yes \_\_\_\_\_ No \_\_\_\_\_

## Circle One Division

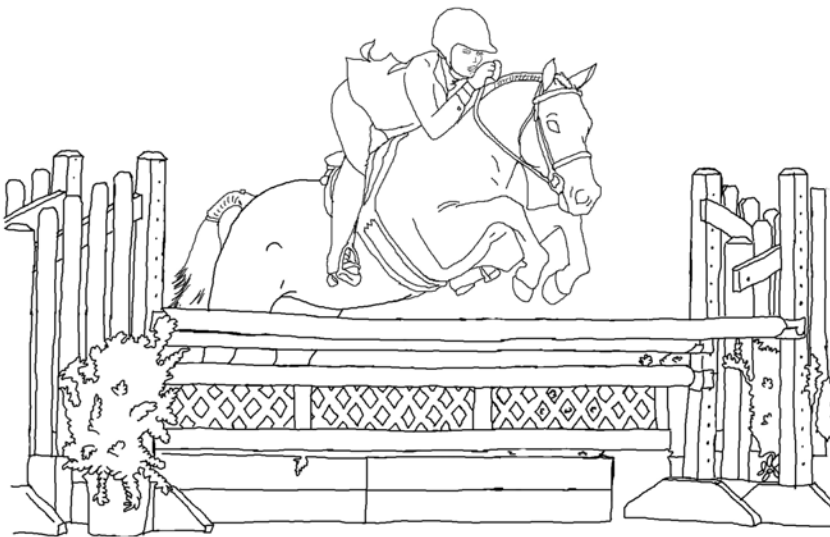
Horseless Horse number of years in project \_\_\_\_\_

Novice = 1-2 years

Intermediate = 3-5 years

Senior = 6 + years

*Divisions are based on number of years in the horse project area, including the current year.*



Members Signature: \_\_\_\_\_

Parent Signature: \_\_\_\_\_

OR

Leader Signature: \_\_\_\_\_

*Resources to be used to complete this record book include: "4-H Horses and Horsemanship", "Horse Science", "Horseless Horse". "State 4-H Horse Show Rules and Regulations and the SCC 4-H & Youth Fair Book.*

## 2012 Horse Project Record Book Requirements

- 1) All books are required to have photo page of the project animal or horse project related photo.
- 2) All books must be signed by exhibitor and parent or leader.
- 3) All pages that are listed as required for your division must be completed, regardless of incorrect *(do not leave any blank answers)* answers. This includes the records page.
- 4) Incomplete books will NOT BE SCORED and will automatically receive "C" rating .
- 5) Books which contain obvious adult contribution will be penalized.
- 5) Creativity, effort, correctness and completeness will all be used in judging this record book.
- 6) Coloring is allowed and encouraged.
- 7) Project book may be put in report covers.
- 8) Please no binders, no puff paint, no sheet protectors. .
- 9) This project record book must be completed and turned in at the May Horse Leaders meeting. Incomplete or late book will not be eligible for championship classes during fair. This book is part of your 4-H horse project.
- 10) Books will be judged and the top 10 scores will receive awards in each division , with grand & reserve if warranted.
- 11) You are welcome to complete pages from other divisions however no extra credit points will be given. Points will be earned in your appropriate division only. However; extra pages could be used to determine top awards if needed.
- 12) Horseless Horse project books will be judged in appropriated division based on years in project.

EVERYONE COMPLETE

**Lets get started!** Start date of book \_\_\_\_/\_\_\_\_/\_\_\_\_

Name of project animal \_\_\_\_\_

## 2012 Project Record Book Point Sheet

*Project record book must be complete, have completed photo page,  
and member signature & parent or leader signature, in order to be graded.*

<u>Page</u>	<u>Title</u>	<u>Pts. Received</u>	<u>Pts. Possible</u>	<u>Divisions</u>
1	Cover Page	_____	7	Everyone
2	Requirements	_____	2	Everyone
3	Point Sheet	XXXX	0	XXXX
4	Photo Page	_____	8	Everyone
5	Project Animal Records	_____	32	Everyone
6	Finding Grooming Tools	_____	8	Everyone
7	True & False	_____	12	Everyone
8	Grooming Tools	_____	17	Everyone
9	Horse Body Parts	_____	15 Novice	24 Intermediate /Senior
10	Hoof Parts	_____	25	Intermediate & Senior
11	Word Scramble	_____	20	Intermediate & Senior
12	Bits	_____	9	Intermediate & Senior
13	Saddle Seat	_____	24	Senior
14	Horse & Horse Science	_____	35	Senior
15	Teeth & Genetics	_____	35	Senior
16	End Page	_____	1	Everyone

Your Total Point Score: \_\_\_\_\_

Total points available: Novice \_\_\_\_ Intermediate \_\_\_\_ Senior \_\_\_\_

# PROJECT PHOTOGRAPHS

Include at least four photos with captions that reflect what you do with your horse and /or how you care for him.

*8 pts possible / \_\_\_\_\_*

# PROJECT ANIMAL RECORDS

EVERYONE COMPLETE

## VETERINARY RECORD

Veterinary Service \_\_\_\_\_

Vet. Phone ( ) \_\_\_\_\_

Age of horse \_\_\_\_\_

Horses name \_\_\_\_\_

\_\_\_\_\_

Normal temperature \_\_\_\_\_

Respiration rate \_\_\_\_\_

Pulse rate \_\_\_\_\_

## SUGGESTED IMMUNIZATIONS

Influenza: Yes \_\_\_ Date \_\_\_\_\_ No \_\_\_

Tetanus: Yes \_\_\_ Date \_\_\_\_\_ No \_\_\_

Wee: Yes \_\_\_ Date \_\_\_\_\_ No \_\_\_

Eee: Yes \_\_\_ Date \_\_\_\_\_ No \_\_\_

Neg. Coggins: Yes \_\_\_ Date \_\_\_\_\_

Other \_\_\_\_\_

Other \_\_\_\_\_

Do you have a worming program? \_yes \_\_\_ No \_\_\_

*If you answered yes above complete below.*

<u>Date</u>	<u>Type of product used</u>
_____	_____
_____	_____
_____	_____
_____	_____

**NOTE: Do not leave any blank line, N/A except on yes or no questions!**

**TEETH** - Floating (recommended annually or as needed) Yes \_\_\_\_\_ No \_\_\_\_\_

*If you answered yes , complete below.*

Date \_\_\_\_\_ Describe results:

\_\_\_\_\_

\_\_\_\_\_

## FEED SUMMARY

My horse is fed: (**circle** all that apply, fill in amount and how often)

Hay: \_\_\_\_\_

Grain \_\_\_\_\_

Hay Cubes \_\_\_\_\_

Supplements \_\_\_\_\_

Pasture \_\_\_\_\_

Other \_\_\_\_\_

Of the feeds that I use we grow our own:

\_\_\_\_\_

\_\_\_\_\_

\_\_\_\_\_

I have my horse at: HOME or BOARD

## **FARRIER RECORDS**

DATE	SERVICE	COST
------	---------	------

*(Shoes, trim, etc)*

\_\_\_\_\_

\_\_\_\_\_

\_\_\_\_\_

\_\_\_\_\_

\_\_\_\_\_

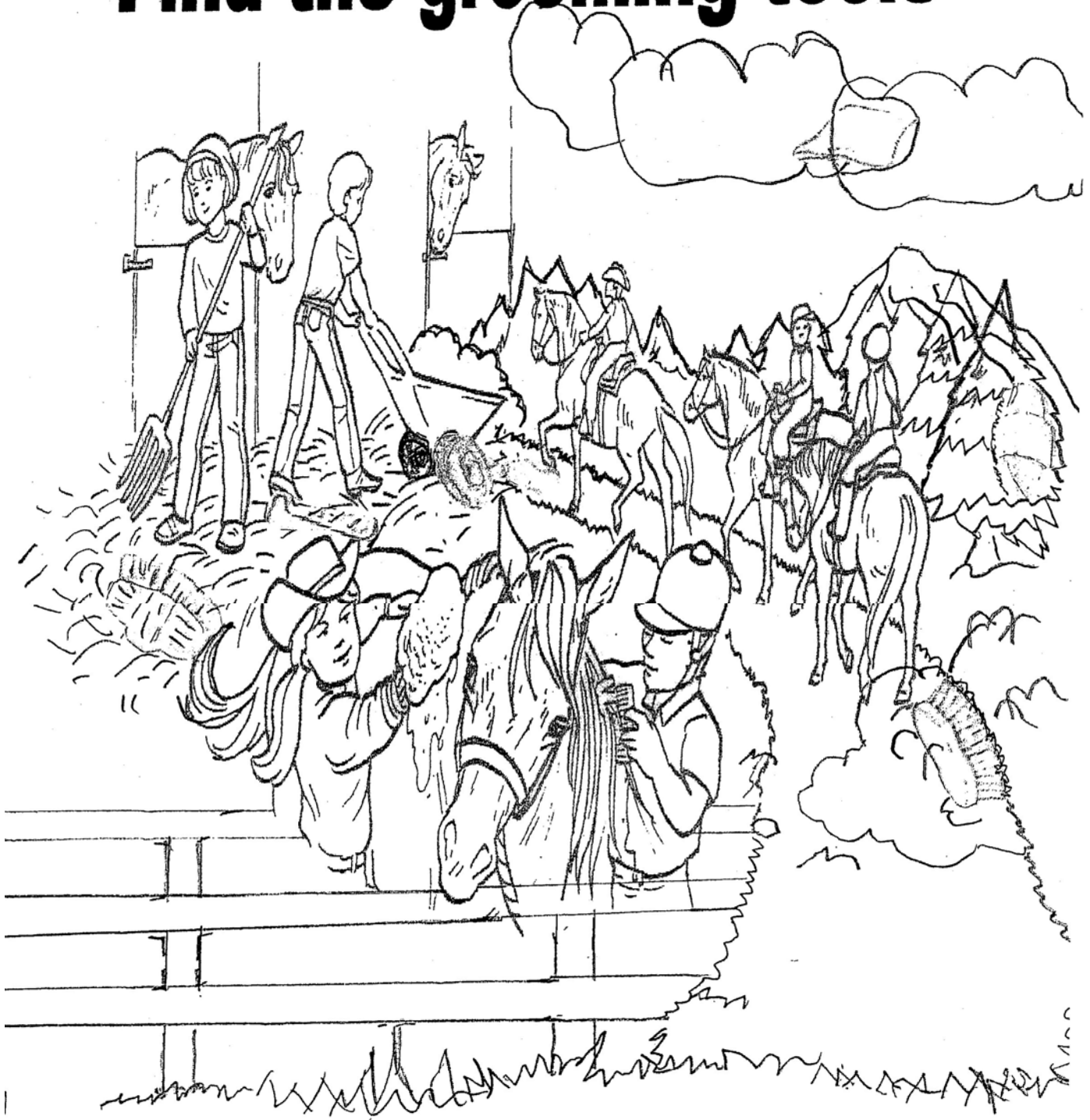
\_\_\_\_\_

\_\_\_\_\_

Circle the hidden grooming tools.

Everyone Complete

# Find the grooming tools



8 pts possible / \_\_\_\_\_

## True and False Questions

1. \_\_\_\_\_ All participants in all hunter classes and gymkhana classes are required to wear properly secured protective riding helmets whenever they are mounted?
2. \_\_\_\_\_ 4-H members should always wear boots designed for horse back riding when handling or riding horses at 4-H events. Tennis shoes, sandals, and flip flops are not acceptable?
3. \_\_\_\_\_ It is ok to be mad at the judge, and be rude to judges, other competitors and horses involved in the show ring?
4. \_\_\_\_\_ Miniature horses do not have to be measured to be shown at fair?
5. \_\_\_\_\_ In dressage, voice signals and clicking of tongue are a 2 point penalty?
6. \_\_\_\_\_ In trail class, you can get disqualified for petting your horse in praise, or hitting your horse for any reason?
7. \_\_\_\_\_ In English/Western Riding, and reining class, skid boots and protective leg wraps cannot be used?
8. \_\_\_\_\_ In gymkhana classes, you will be disqualified for running your horse through the chute or gate to enter horse arena?
9. \_\_\_\_\_ Horses can be ridden from the barn to the show rings at fair?
10. \_\_\_\_\_ Horses must use designated horse crossing area located near the park entrance?
11. \_\_\_\_\_ Ponies must measure 59 inches or less at the withers. Shod ponies will be allowed ONE inch for thickness of shoes?
12. \_\_\_\_\_ In all Western, English, and Gymkhana classes, tying or securing the rider or any part of the rider in the saddle or to any other equipment is unsafe. This action will disqualify the rider?

## Grooming True or False

Everyone Complete

- 1.) \_\_\_\_\_ It is very important to groom horses daily.
- 2.) \_\_\_\_\_ "Groom" means to clean and brush a horse, but does not include cleaning out his hooves.
- 3.) \_\_\_\_\_ Good grooming, along with proper nutrition, makes the horse's coat shine.
- 4.) \_\_\_\_\_ Start grooming on the horse's right side because this is the side you walk when you lead him and the side you mount on.
- 5.) \_\_\_\_\_ Start grooming on the left side and finish on the right side.
- 6.) \_\_\_\_\_ When using the dandy brush you should brush in the direction the hair lays using short strokes.
- 7.) \_\_\_\_\_ A grooming cloth should be used first for a final shine.
- 8.) \_\_\_\_\_ Use a rubber, plastic, or metal curry comb and rub the coat using a circular motion to loosen the dirt and dead hair.

**Identify the grooming tools below by writing the name of tool on the line below it.**



\_\_\_\_\_



\_\_\_\_\_



\_\_\_\_\_



\_\_\_\_\_



\_\_\_\_\_



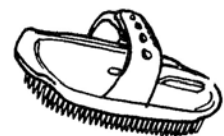
\_\_\_\_\_



\_\_\_\_\_



\_\_\_\_\_

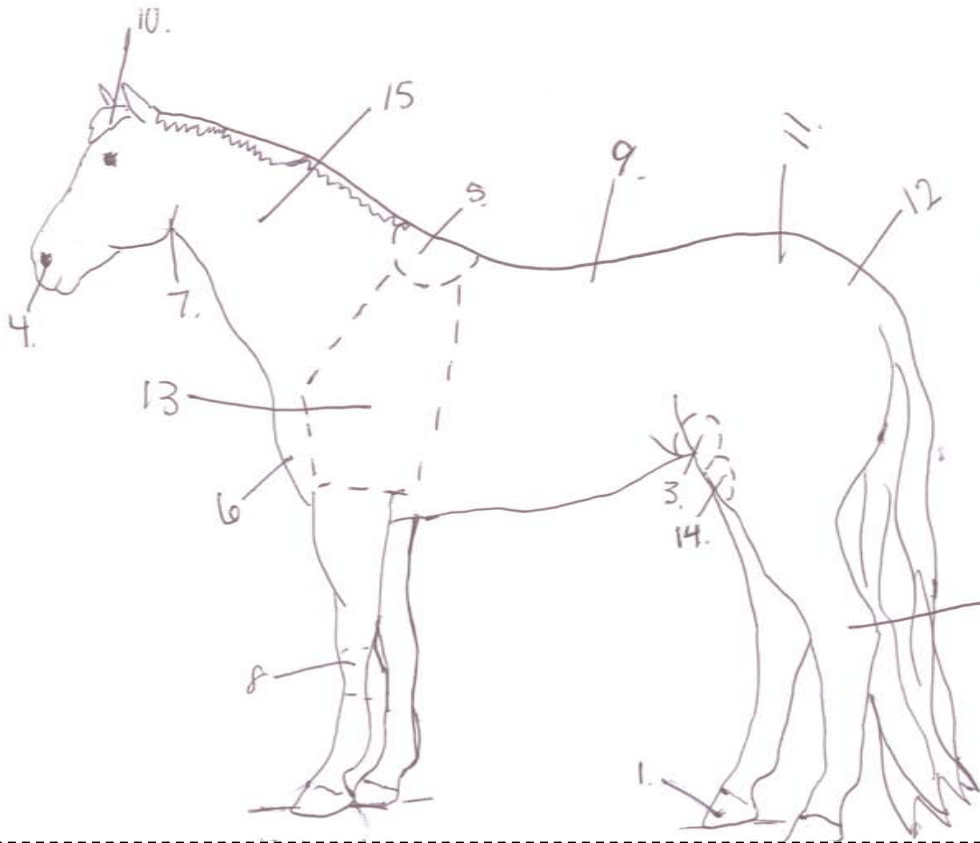


\_\_\_\_\_

# Horse Body Parts

Everyone

Use the word bank to identify parts



1. \_\_\_\_\_

2. \_\_\_\_\_

3. \_\_\_\_\_

4. \_\_\_\_\_

5. \_\_\_\_\_

6. \_\_\_\_\_

7. \_\_\_\_\_

8. \_\_\_\_\_

9. \_\_\_\_\_

10. \_\_\_\_\_

**WORD BANK**

- |         |        |         |      |        |
|---------|--------|---------|------|--------|
| neck    | poll   | croup   | loin | hock   |
| withers | knee   | nostril | back | stifle |
| chest   | throat | flank   | hoof |        |

11. \_\_\_\_\_

12. \_\_\_\_\_

13. \_\_\_\_\_

14. \_\_\_\_\_

15. \_\_\_\_\_

Intermediate & Senior

Identify the following body parts by drawing a line on the horse above & writing the matching number.

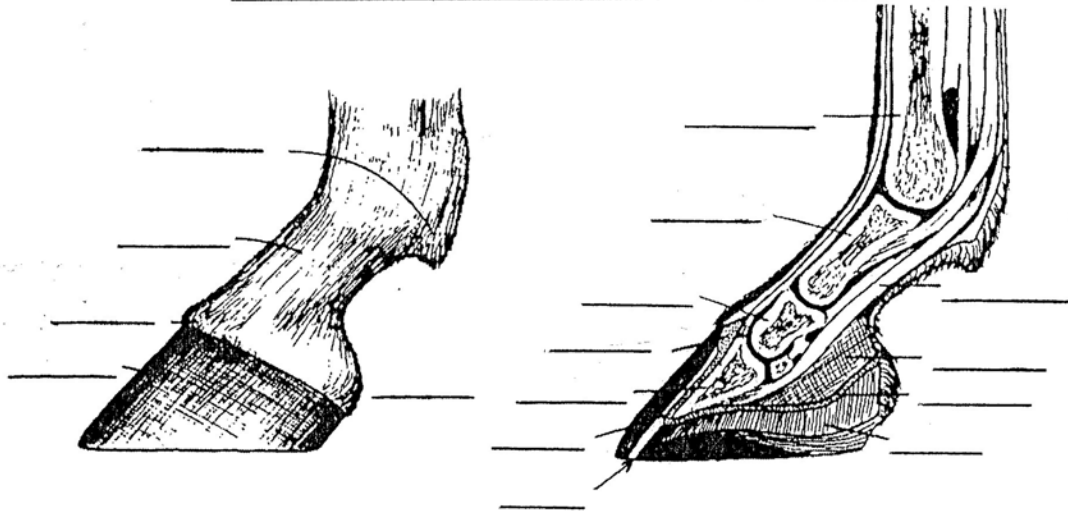
16) ergot    17) girth    18) barrel    19) abdomen  
 20) cannon    21) fetlock    22) pastern    23) cornet  
 24) crest

Novice 15 pts possible / \_\_\_\_\_

Intermediate & Sr. 24 / \_\_\_\_\_

## Parts of the Pastern and Foot

Place the corresponding number on the line next to the foot part



### Word Bank

- |                     |                       |                   |                     |
|---------------------|-----------------------|-------------------|---------------------|
| 1. Bulb             | 2. Cannon Bone        | 3. Coffin Bone    | 4. Coronary Band    |
| 5. Coronet          | 6. Deep Flexor Tendon | 7. Fetlock        | 8. Hoof Wall        |
| 9. Insensitive Frog | 10. Long Pastern      | 11. Pastern       | 12. Plantar Cushion |
| 13. Sensitive Frog  | 14. Sensitive Laminae | 15. Short Pastern | 16. White Line      |

\* \* \* \* \*

### FOOT CARE & FUNCTIONS

#### Fill in the Blanks

1. The important points in the care of a horse's feet are to keep them \_\_\_\_\_, prevent them from \_\_\_\_\_, and \_\_\_\_\_ them so they retain proper shape and length.
2. The three main functions of the hoof are: \_\_\_\_\_, \_\_\_\_\_ and \_\_\_\_\_.
3. \_\_\_\_\_ is a disease of the foot characterized by a pungent odor, which causes a softening of tissues in the cleft of the frog and bars and produces lameness.
4. The healthy hoof grows \_\_\_\_\_ to \_\_\_\_\_ inch per month.

25 pts possible / \_\_\_\_\_

## HORSE WORD SCRAMBLE PUZZLES

Unscramble the first four words in each set of scrambles. Then use the circled letters to unscramble the final word. Some of the words may unscramble into more than one word, but only one word is related to the puzzle.

### 1. ABOUT HORSES

L I L Y F

R E G A L

N A M E

E H O S O V

**Answer:**

### 2. ABOUT HORSE 2

C L O T

R E A M

D E G G I L N

E I N O P S

**Answer:**

### 3. HORSE BREEDS

I N O P T

A A A B I N R

A A C E T Z

A G M N S T U

**Answer:**

### 4. HORSE TACK

S I R E N

A D E D L S

A E H L R T

B D E L I R

**Answer:**

# Bits

Intermediate & Senior Complete

Draw a line from the bit picture to match each bit to its proper name:



Pelham Curb Bit



Bar Bit



Spade Bit



Walking Horse Bit



Dee Race Bit



Liverpool Bit



Snaffle Bit



Half-Cheek Snaffle Bit



Weymouth Curb Bit

9 pts possible / \_\_\_\_\_

### Saddle Seat

Fill in the blanks.

1. The \_\_\_\_\_ of the rider's \_\_\_\_\_ depends upon how, and where, the horse carries its \_\_\_\_\_.
2. The \_\_\_\_\_ should be \_\_\_\_\_ the horse's \_\_\_\_\_, with a definite bend in the rider's \_\_\_\_\_.
3. Both hands must be \_\_\_\_\_ and both \_\_\_\_\_ and \_\_\_\_\_ must be held in each hand at all \_\_\_\_\_.
4. At the canter, a rider's legs are used to urge the horse's \_\_\_\_\_ up and \_\_\_\_\_ the horse.
5. The hands should be \_\_\_\_\_ and \_\_\_\_\_ the horse's head and neck.

### Reining

True and False

1. \_\_\_\_ To rein a horse is not only to guide him, but also to control his every movement.
2. \_\_\_\_ Scoring will be on the bases of 70 to 80, with 60 representing an average performance.
3. \_\_\_\_ Performing maneuvers other than in the specific order gives you extra points.
4. \_\_\_\_ Using more than one finger between the reins is a disqualification when riding western.

### Fitting and Showing

True and False

1. \_\_\_\_ Exhibitors should lead from the left side of the horse, holding the lead shank in the right hand, about 8-12 inches from the halter.
2. \_\_\_\_ When stopping the horse in front of the judge, you should stop the horse approximately a horse length away.
3. \_\_\_\_ Exhibitors should stay to one side and not block the judge's view.
4. \_\_\_\_ When a turn requires a pivot; the ideal turn should involve the horse pivoting on the left hind leg.

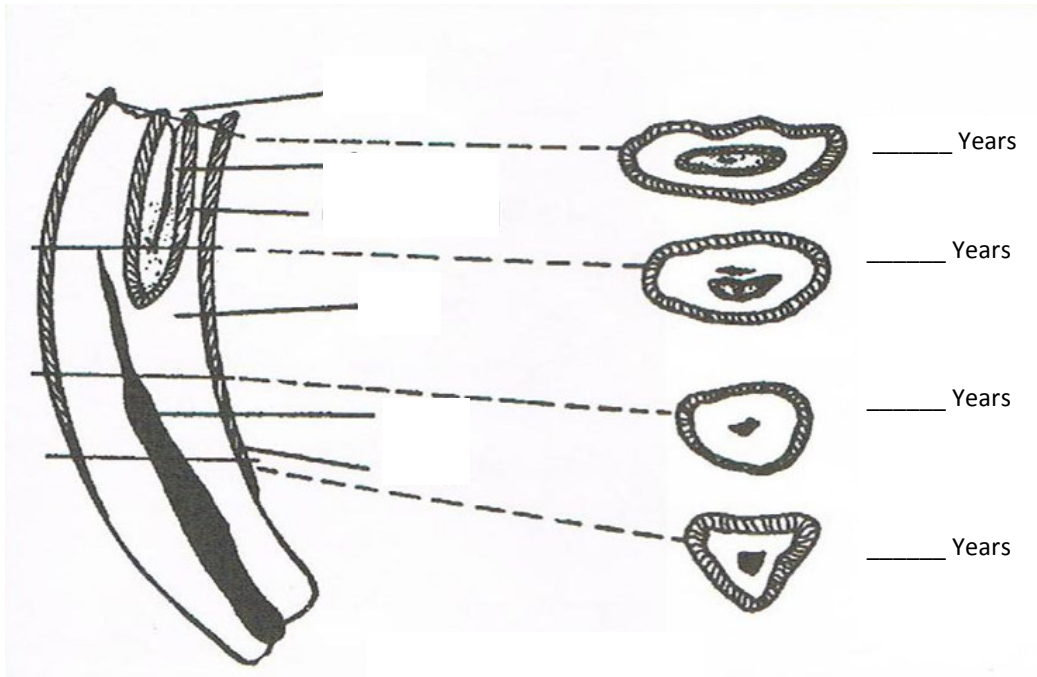
## Horses and Horsemanship and Horse Science

Fill In the blanks.

1. What is the wooden or metal frame of a saddle called? \_\_\_\_\_
2. What is slow trot called? \_\_\_\_\_
3. What is a "cooled out" horse? \_\_\_\_\_
4. What is the canter? \_\_\_\_\_
5. Name four natural aids used to control the horse? \_\_\_\_\_,  
\_\_\_\_\_, \_\_\_\_\_ and \_\_\_\_\_
6. What is the first stride in the lope or canter? \_\_\_\_\_
7. Which side of the horse is the near side? \_\_\_\_\_
8. What is the rising and descending of the rider with the rhythm of the trot? \_\_\_\_\_
9. Why is washing a poor substitute for regular grooming?  
\_\_\_\_\_
10. What nutrient is both a lubricant and a regulator of body heat? \_\_\_\_\_
11. Length of neck plays an important part in length of? \_\_\_\_\_
12. What are the three main types of feed? \_\_\_\_\_  
\_\_\_\_\_, \_\_\_\_\_ and \_\_\_\_\_
13. Can a horse vomit? \_\_\_\_\_
14. It is estimated that a horse secretes how much saliva in 24 hours? \_\_\_\_\_
15. What makes up most of the blood? \_\_\_\_\_
16. Although a horse may manage to survive for a few weeks without \_\_\_\_\_ it will  
not live for more than a few days without \_\_\_\_\_.
17. The sequence of footfalls at walk, when it is begun with the left hind leg, is:  
1. \_\_\_\_\_ 2. \_\_\_\_\_  
3. \_\_\_\_\_ 4. \_\_\_\_\_
18. The normal temperature of the horse is? \_\_\_\_\_
19. The average gestation period of the brood mare is \_\_\_\_\_
20. A "hand" (horse measurement) is? \_\_\_\_\_
21. Never tie a horse with the lead chain \_\_\_\_\_ or \_\_\_\_\_
22. A horse's hooves should be trimmed every \_\_\_\_ to \_\_\_\_ weeks, depending on quality  
of hoof and how much punishment the hooves receive.
23. A horse's pulse may be taken by pressure of the fingers on the artery which passes?  
\_\_\_\_\_
24. Which of the energy- rich grains is safest and easiest to feed? \_\_\_\_\_

# Teeth / Genetics

Teeth: Label the sectional view of the tooth, and fill in the appropriate ages for the given sections.



Genetics: Answer the following questions

1. Explain mitosis: \_\_\_\_\_

---



---



---



---

2. Explain meiosis: \_\_\_\_\_

---



---



---



---

3. When breeding a red (chestnut) mare (bb) to a truly black stallion (BB); what color will the foal be? Explain your answer.

---



---



---



---

4. Are genetics the only key to a fast horse? Explain your answer. \_\_\_\_\_

---

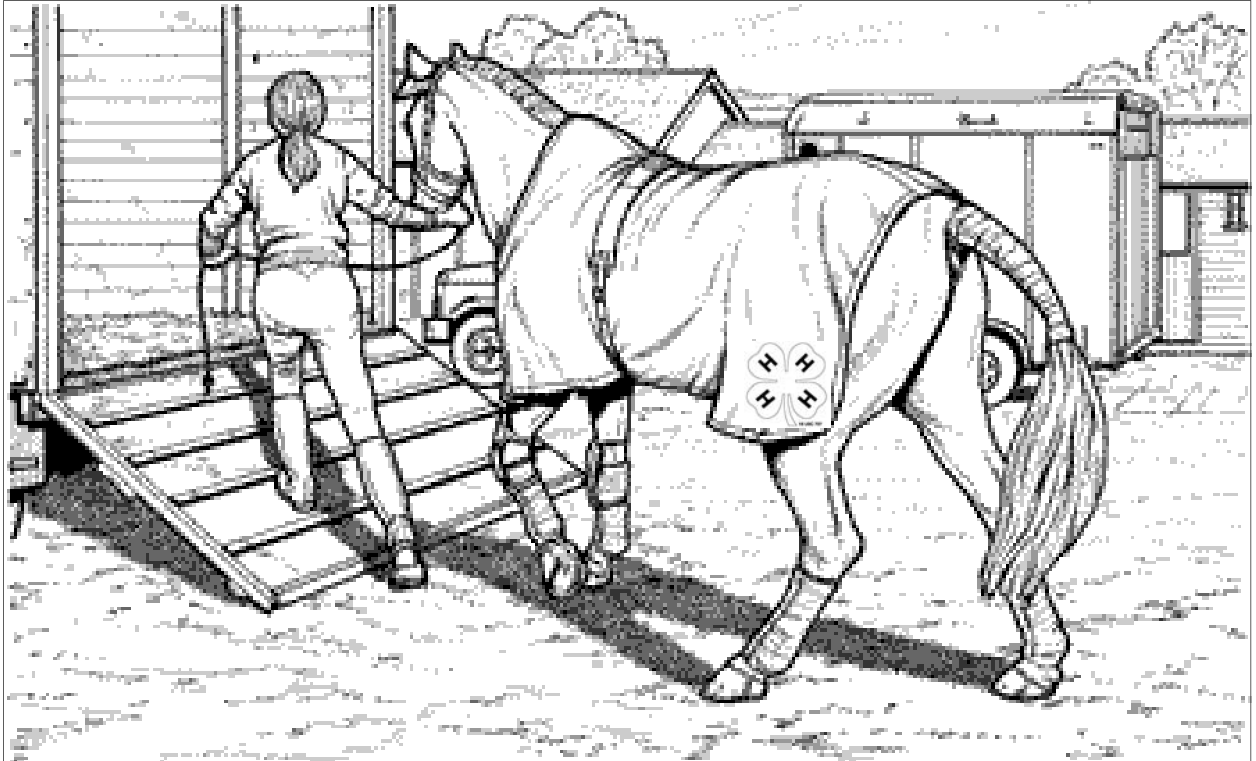


---

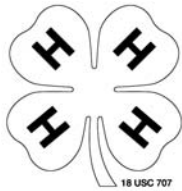
EVERYONE COMPLETE

The End

Date Complete \_\_\_\_/\_\_\_\_/\_\_\_\_



*Project record book created by: 4-H Horse Leaders project record book committee and teen leaders in conjunction with MSUE 4-H Programing Staff.*



**MICHIGAN STATE UNIVERSITY** | **Extension**

1 pt possible / \_\_\_\_\_

MSU is an affirmative-action, equal-opportunity employer. Michigan State University Extension programs and materials are open to all without regard to race, color, national origin, gender, gender identity, religion, age, height, weight, disability, political beliefs, sexual orientation, marital status, family status or veteran status.